



# County of Santa Barbara



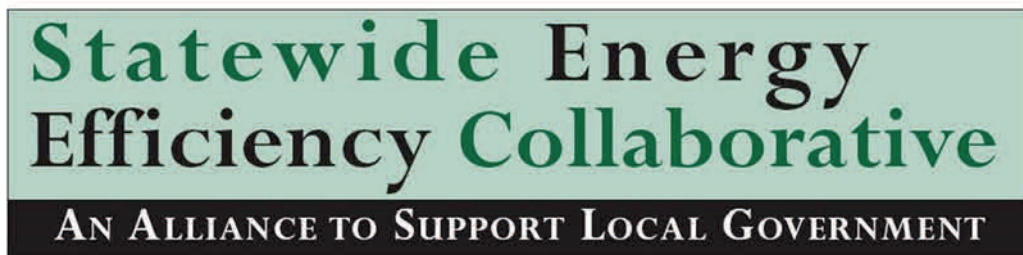
Platinum Level Award Winner



## About This Document

This document tracks and shares local agency best practice activities completed and counted as part of a city or county's participation in the climate change and sustainability recognition program, the Beacon Award: Local Leadership Toward Solving Climate Change. The Beacon Award is a statewide program recognizing cities and counties that are working to reduce greenhouse gas emissions, save energy and adopt policies and programs that promote sustainability.

The Beacon Award is sponsored by the Institute for Local Government and the Statewide Energy Efficiency Collaborative. The Statewide Energy Efficiency Collaborative (SEEC) provides support to cities and counties to help them reduce greenhouse gas emissions and save energy. SEEC is an alliance between three statewide non-profit organizations and California's four Investor-Owned Utilities. It builds upon the unique resources, expertise and local agency relationships of each partner.



The Beacon Program is funded by California utility ratepayers and administered by Pacific Gas and Electric Company, San Diego Gas and Electric, Company, Southern California Edison and Southern California Gas Company under the auspices of the California Public Utilities Commission.





## Energy Efficiency and Conservation Activity

Level	Energy Efficiency and Conservation Activities	Reported
<b>Silver</b>	1. The county participates in the Santa Barbara Energy Partnership Program. The program, with assistance from the Community Environmental Council and the Santa Maria Valley Chamber of Commerce, provide a performance-based opportunity from Southern California Edison, PG&E and the Gas Company to access all programs and incentives for the program participants to demonstrate energy leadership in tis community through energy savings action.	<b>5-2014</b>

Level	Energy Efficiency and Conservation Activities	Reported
<b>Gold</b>	1. In 2013, the General Services Department developed the Santa Barbara Energy Action Plan to establish goals for electricity reduction by identifying actual electricity efficiency projects at county facilities.  2. Since 2011, the county has used Energy CAP to monitor real-time energy use in agency buildings to identify energy usage patterns and abnormalities. <a href="http://longrange.sbcountyplanning.org/programs/climateactionstrategy/docs/Hearing_attachments/MPC%20082514/Attachment%20C%20Proposed%20Final%20EIR.pdf">http://longrange.sbcountyplanning.org/programs/climateactionstrategy/docs/Hearing_attachments/MPC%20082514/Attachment%20C%20Proposed%20Final%20EIR.pdf</a>	<b>5-2014</b>



Level	Energy Efficiency & Conservation Activities	Reported
Platinum	<ol style="list-style-type: none"> <li data-bbox="344 199 1263 562">1. In 2013, the county created a Benchmarking Policy as a component of the SAP that serves as a decision making tool to identify energy reduction projects that will be implemented between 2013 and 2020. The benchmarking policy will enable the county to understand the relative energy efficiency of buildings or campuses owned and operated by the county, set energy savings goals and regularly evaluate progress. The policy leverages the U.S. Environmental Protection Agency's (EPA) Energy Star Portfolio Manager Software as the policy's main implementation tool and requires the county to benchmark every year. More information can be found at: <a href="http://longrange.sbcountyplanning.org/programs/climateactionstrategy/climateaction.php">http://longrange.sbcountyplanning.org/programs/climateactionstrategy/climateaction.php</a>.</li> <li data-bbox="344 573 1263 726">2. Launched the emPower Santa Barbara Program in 2010 (now empower Central Coast) to help homeowners make energy saving improvements to their homes through incentives, financing and expert energy advice. The program is funded through grants from the U.S. Department of Energy. More information can be found at: <a href="http://www.empowersbc.org">http://www.empowersbc.org</a>.</li> <li data-bbox="344 737 1263 1167">3. In 2014, the County's General Services Department prepared a Sustainability Progress Report as an update to the 2010 Sustainability Action Plan. The Progress Report provides an overview of the County of Santa Barbara's sustainability goals and accomplishments. The sustainability accomplishments include: installing motion sensors, photocells and multi-level switches to control room lighting systems in most County facilities; replacing incandescent lights with more energy efficient lighting, such as compact fluorescents, overhead fluorescent lights or light-emitting diodes (LEDs); upgrading exit signs with LED lighting when bulbs need replacing; adding vending misers to all cold beverage machines; and upgrading pumps, motors and other energy intensive machinery where feasible. More information can be found at: <a href="http://longrange.sbcountyplanning.org/programs/climateactionstrategy/docs/Municipal/Sustainability%20Progress%20Report.pdf">http://longrange.sbcountyplanning.org/programs/climateactionstrategy/docs/Municipal/Sustainability%20Progress%20Report.pdf</a>.</li> <li data-bbox="344 1178 1263 1283">4. The County Parks Division has adopted a water conservation approach to turf management that includes replacing lawn areas with mulch where feasible.</li> </ol>	5-2014





# Water & Wastewater Systems Activity

Level	Water & Wastewater Systems Activity	Reported
Silver	<ol style="list-style-type: none"> <li>1. The County's Public Works Department administers Project Clean Water to meet Clean Water Act requirements for urban runoff and to protect the public health and enhance environmental quality in Santa Barbara County watersheds and beaches. Project Clean Water focuses on eliminating pollutants and increasing public awareness through community workshops, Facebook, school education campaigns, and distributing best practices materials to protect water quality from new and redevelopment projects. The Program utilizes a webpage to provide education materials such as guidelines for sustainable landscapes and rain gardens, resource recycling guides, greening businesses and information on wastewater treatment plant tours. For more information, please visit: <a href="http://www.sbprojectcleanwater.org/default.aspx">www.sbprojectcleanwater.org/default.aspx</a>.</li> </ol>	5-2014

Level	Water & Wastewater Systems Activities	Reported
Gold	<ol style="list-style-type: none"> <li>1. Since 2013, the county has been using EnergyCAP to monitor real-time water usage in agency buildings to identify usage patterns and abnormalities.</li> <li>2. Santa Barbara County Regional Water Efficiency Program promotes the efficient use of urban and agricultural water supplies county-wide, and provides information and assistance to the eighteen local water purveyors within the county. Through the RWEF, the County Water Agency coordinates cooperative water conservation efforts among purveyors, co-founds projects and programs, acts as a clearinghouse for information on water efficiency, manages specific projects and programs, and monitors local, state and national legislation related to efficient water use. Please visit <a href="http://www.countyofsb.org/pwd/pwwater.aspx?id=3574">http://www.countyofsb.org/pwd/pwwater.aspx?id=3574</a> for more information.</li> </ol>	5-2014





	<b>Water &amp; Wastewater Systems Activities</b>	<b>Reported</b>
<b>Platinum</b>	<p>1. The County's Public Works Department provides clean water education programs to students through Project Clean Water. The program engages students in learning about water pollution through hands-on activities including free classroom presentations and field trips. One such activity is Creek Kids Series offered to fourth through sixth grades at eligible schools in the county. The series includes two in-class lessons, a half-day field trip to a watershed center and a local creek and an optional service-learning project. Through the series, students will learn:</p> <ul style="list-style-type: none"> <li>• About watersheds;</li> <li>• Where water comes from and where it goes;</li> <li>• What makes a creek healthy;</li> <li>• Sources of and solutions to water pollution;</li> <li>• The dangers of plastic debris in the ocean; and</li> <li>• What students can do to protect water quality.</li> </ul> <p>For more information, please visit: <a href="http://www.sbprojectcleanwater.org/whatyou.aspx?id=102">http://www.sbprojectcleanwater.org/whatyou.aspx?id=102</a>.</p> <p>2. The County's Public Works Department assists in organizing and participates in beach and creek clean up and volunteer water quality monitoring. Additionally, every September, the RRWMD coordinates Coastal Cleanup Day for Santa Barbara County by soliciting volunteers to clean the various beaches and creeks in Santa Barbara County. For more information Coastal Cleanup Day for Santa Barbara County, please visit: <a href="http://www.lessismore.org/pages/coastal-cleanup-day-in-santa-barbara-county">http://www.lessismore.org/pages/coastal-cleanup-day-in-santa-barbara-county</a></p> <p>3. The County General Services and Parks Division assesses, maintains, and repairs existing irrigation systems to minimize water use, including parking lot landscaping, public rest rooms and parks, golf courses, and other recreational facilities. Currently, the County Parks Division practices the following water conservation activities: turning off irrigation systems, using irrigations systems to provide just enough water to keeps park vegetation alive, or using smart irrigation controllers.</p> <p>4. The County Parks Division utilizes mulch in all county parks as a water conservation measure. The County Parks Division has also adopted a water conservation approach to turf management that includes replacing lawn areas with mulch where feasible.</p>	<b>5-2014</b>





# Green Building Activity

Level	Green Building Activity	Reported
Silver	<ol style="list-style-type: none"> <li>In 2014, the County Board of Supervisors adopted a Zero Net Energy Resolution as part of the County's Sustainability Progress Report (SPR). The actions identified in the SPR focus on the reduction of the County's facility energy consumption, transportation energy consumption, and landfills, and the conservation of county resources and other sustainability activities. To learn more about SPR, please visit: <a href="http://longrange.sbcountyplanning.org/programs/climateactionstrategy/climateaction.php">http://longrange.sbcountyplanning.org/programs/climateactionstrategy/climateaction.php</a>.</li> </ol>	5-2014

Level	Green Building Activities	Reported
Gold	<ol style="list-style-type: none"> <li>The County of Santa Barbara has established a green building program, known as Smart Build Santa Barbara (SB2), formerly known as the Innovative Building Review Program. SB2 is a free, voluntary program that encourages applicants early in the planning process to make their new or existing developments more energy efficient and sustainable. SB2 also promotes development that exceeds Title 24 standards. The ultimate goal of SB2 is to encourage applicants to build developments that use little energy, which are 100% supplied by renewable sources, without forsaking comfort and reasonable building costs. The Board of Supervisors approved the updates to the county's Green Building Program on July 1st, 2014. The current website for SB2, as well as supporting materials, can be found at: <a href="http://longrange.sbcountyplanning.org/programs/energyelement/smartbuildSB.php">http://longrange.sbcountyplanning.org/programs/energyelement/smartbuildSB.php</a>.</li> <li>Participants in the county's green building program (SB2) receive free green building advice from the SB2 committee, which is made up of local professionals including contractors, architects, engineers, energy consultants, and government officials who have a remarkable amount of knowledge in innovative, energy-efficient and green developments. The Committee's advice will benefit the design, construction and operation of the development in a number of ways, including increased marketability, increased comfort and reduced utility bills.</li> </ol>	5-2014



Level	Green Building Activities	Reported
Platinum	<ol style="list-style-type: none"> <li>1. All development plans that meet one of the two voluntary tiers in SB<sup>2</sup>'s checklist and CALGreen's mandatory requirements will receive a Santa Barbara County Smart Building Award Certificate. Additional incentives include: <ul style="list-style-type: none"> <li>• Tier 1: 50% reduction in energy plan check fee, expedited Building &amp; Safety Division plan check review process (average 30%-50% time reduction), and use of SB<sup>2</sup>'s logo for marketing.</li> <li>• Tier 2: All Tier 1 incentives and a Resolution of Commendation from the County Board of Supervisors. To learn more about SB<sup>2</sup>, please visit: <a href="http://longrange.sbcountyplanning.org/programs/energyelement/smartbuildSB.php">http://longrange.sbcountyplanning.org/programs/energyelement/smartbuildSB.php</a>.</li> </ul> </li> <li>2. In 2014, the County Board of Supervisors adopted a ZNE Resolution as part of the county's Sustainability Progress Report (SPR). The actions identified in the SPR focus on the reduction of the county's facility energy consumption, transportation energy consumption, and landfills, and the conservation of county resources and other sustainability activities. To learn more about SPR, please visit <a href="http://longrange.sbcountyplanning.org/programs/climateactionstrategy/climateaction.php">http://longrange.sbcountyplanning.org/programs/climateactionstrategy/climateaction.php</a>.</li> <li>3. In collaboration with the South Coast Energy Efficiency Partnership (SCEEP), the County hosted a green building training titled "Title 24: Where We're Headed with the 2013 Standards in September 2013." The free training was held for local architects, builders, planners, mechanical engineers, electrical engineers and inspectors and provided detailed review of the new Title 24, 2013 standards. Topics included building envelope, lighting and mechanical requirements that affect building design for new construction projects. County Planning and Development staff, including planners, inspectors, and plan checkers, regularly attends various workshops and seminars on energy efficiency offered through SCEEP, Southern California Edison, Pacific Gas and Electric, Southern California Gas Company and the New Buildings Institute.</li> </ol>	5-2014







# Waste Reduction and Recycling Activity

Level	Waste Reduction Activity	Reported
Silver	<p>1. Since 1992, the Santa Barbara County Resource Recovery and Waste Management Division (RRWMD) has administered a residential composting program to encourage households to compost their yard waste, garden trimmings, and food residuals and thereby reduce the amount of trash that they generate. Composting bins are offered for sale year-round for \$40, a savings of over 50 percent off the retail price. The RRWMD also publishes a composting booklet that discusses such topics as the different composting systems and choosing the right one, building a composting system, using one's compost, and describing other types of yard waste reduction. Finally, composting workshops are conducted every spring for people who want to learn how to compost or need a refresher on composting methods. More information can be found at: <a href="http://www.lessismore.org/materials/70-home-composting">http://www.lessismore.org/materials/70-home-composting</a>.</p>	5-2014

Level	Waste Reduction Activities	Reported
Gold	<p>1. Santa Barbara County Resource Recovery and Waste Management Division (RRWMD) works with schools in the unincorporated county and the Cities of Goleta and Solvang to foster waste prevention, reduction, and recycling. Waste audits, recycling containers, outreach materials, presentations, and tours of the South Coast Recycling and Transfer Station (SCRTS) and the Tajiguas Landfill are among the services offered to schools. The RRWMD also contracts with Art from Scrap (AFS), a nonprofit agency, to provide the following services to schools in the Cities of Goleta and Solvang and the unincorporated County.</p> <ul style="list-style-type: none"> <li>• Teaching students the concepts of Reduce, Reuse, and Recycle through presentations in classrooms and at the AFS facility;</li> <li>• Taking students on tours of the Tajiguas Landfill and the SCRTS;</li> <li>• Describing the process of composting and its benefits; and</li> <li>• Holding workshops whereby students make arts and crafts using scrap materials. <a href="http://www.lessismore.org/materials/23-school-recycling">www.lessismore.org/materials/23-school-recycling</a>.</li> </ul>	5-2014



Level	Waste Reduction and Recycling	Reported
Gold	2. The county started a program in April 2001 to collect and recycle various types of batteries, such as: 12 volt, 6 volt, 9 volt, A, AA, AAA, C and D sized batteries, including alkaline, nickel-cadmium, and lithium batteries. County employees are encouraged to recycle their used batteries by sending them through inter-departmental mail to the Mail Services Division. Mailroom staff members regularly drop off the batteries at the Community Hazardous Waste Collection Center, located at the University of California, Santa Barbara (UCSB).	5-2014

Level	Waste Reduction and Recycling Activities	Reported
Platinum	<ol style="list-style-type: none"> <li>1. Unused computers generated by the county are donated to the Computers for Families program. Under the Computers for Families program, boys at the Los Prietos Boys Camp are taught how to repair and upgrade computers. These computers are then donated to needy families who do not have a computer. For more information, please visit: <a href="http://www.lessismore.org/">http://www.lessismore.org/</a>.</li> <li>2. Every September, the RRWMD coordinates Coastal Cleanup Day for Santa Barbara County by soliciting volunteers to clean the various beaches and creeks in Santa Barbara County. For more information, please visit: <a href="http://www.lessismore.org/pages/coastal-cleanup-day-in-santa-barbara-county">http://www.lessismore.org/pages/coastal-cleanup-day-in-santa-barbara-county</a>.</li> <li>3. Each December, the RRWMD reminds people in Santa Barbara County to recycle their Christmas trees. Advertisements are placed in newspapers and on radio and television stations advising people where they can recycle their Christmas trees. Over half of the county's Christmas trees are processed at a County solid waste management facility. For more information, please visit: <a href="http://www.lessismore.org/materials/77-christmas-tree-recycling">http://www.lessismore.org/materials/77-christmas-tree-recycling</a>.</li> <li>4. Santa Barbara County households may obtain free mulch for their homes and gardens by accessing mulch piles maintained by the county Resource Recovery and Waste Management Division (RRWMD) at locations in Santa Barbara, Santa Ynez Valley and Santa Maria.</li> </ol>	5-2014

## Christmas Tree Recycling

During this holiday season, help Mother Nature by recycling your Christmas tree. No matter where you live in Santa Barbara County, recycling your Christmas tree is easy!





# Climate-friendly Purchasing Activity

Level	Climate-Friendly Activity	Reported
<b>Silver</b>	1. The county provides a webpage called Rudyslist to streamline the surplus property process. By using this internal webpage, departments can post their surplus items or request surplus items.	<b>5-2014</b>

Level	Climate-Friendly Activities	Reported
<b>Gold</b>	<ol style="list-style-type: none"> <li>1. In 2001, the county purchased the first of its hybrid vehicles. Since then, as part of the GreenFleet Management Plan, the County is transitioning from conventional gasoline powered vehicles to hybrid powered vehicles has included 18 hybrid powered vehicles, four electric vehicles and seven neighborhood electric vehicles.</li> <li>2. In an effort to promote local economic vitality &amp; sustainability, the County of Santa Barbara supports local vendors through their outreach program. The goal of the program is to spend 60% of our discretionary revenue with local vendors. In 2013, the county spend more approximately \$100 million locally.</li> </ol>	<b>5-2014</b>

Level	Climate-Friendly Activities	Reported
<b>Platinum</b>	<ol style="list-style-type: none"> <li>1. The County's Board of Supervisors, has directed the County Purchasing Manager to purchase paper and paper products containing recycled materials and to give preference to the suppliers of recycled paper and paper products, if the bids of these suppliers do not exceed by more than twelve percent (12%) of the cost of the lowest bid or price quoted by vendors offering unrecycled paper or paper products. All bidders shall specify the percentage of recycled paper content in the appropriate space provided in the bid. "Recycled paper" means all paper and woodpulp products containing not less than 30 percent of its total weight of secondary and postconsumer waste and with not less than 10 percent of its total weight consisting of postconsumer waste.</li> <li>2. Both waste haulers contracted by the county are required to obtain a Green Business Certification and conduct environmentally responsible business practices.</li> </ol>	<b>5-2014</b>



Level	Climate-Friendly Activities	Reported
Platinum	3. Both waste haulers contracted by the county are required to obtain a Green Business Certification and conduct environmentally responsible business practices. As a result, both of the County of Santa Barbara franchised waste haulers, Waste Management in the North County and MarBorg on the South Coast, have converted their collection fleets to run on compressed natural gas in order to meet the clean air standards in their contracts with the County. Both companies have built natural gas fueling stations. The North County natural gas fueling station is open to the public.	5-2014



Santa Barbara Mayor Helene Schneider and other local dignitaries, with Brian Borgatello, center, cut the ribbon Monday on MarBorg Industries' new compressed natural gas station at the company's Quarantina Street yard. (Sonia Fernandez / Noozhawk photo)







# Renewable Energy and Low-Carbon Fuels Activity

Level	Renewable Energy and Low Carbon Fuels Activity	Reported
Silver	1. In 2012, Santa Barbara County successfully installed a one megawatt solar photovoltaic array to feed directly into the utility meter that feeds the facilities located within the Calle Real/San Antonio campus. This campus is the largest user of electricity Countywide. The project provides up to one-third of the electricity usage of the campus through renewable means.	5-2014

Level	Renewable Energy and Low Carbon Fuels Activity	Reported
Gold	<p>1. The county installed a one megawatt photovoltaic (PV) project adjacent to the Laguna County Sanitation District (LCSD) wastewater reclamation plant outside of Santa Maria. The project utilizes two separate array systems using approximately 4,100 PV panels and provides electricity to the LCSD wastewater reclamation facility located just to the south. The LCSD photovoltaic project generates an additional 1,786,628 kWh annually for the county.</p> <p>2. In 2009, the county constructed a parking lot on Pardall Road and Embarcadero del Mar with the goal of encouraging downtown revitalization and private development through providing short-term paid parking for commercial users and off-site parking for nearby residential housing units. The parking lot has a solar photovoltaic installation which powers both the night lighting of the parking lot and Pardall Road.</p>	5-2014

Level	Renewable Energy and Low Carbon Fuels Activities	Reported
Platinum	1. The county has installed a landfill gas collection system at the Tajiguas Landfill. The system collects methane which off-gases from the landfill. The methane is converted into power through the use of an on-site generator. The system creates three megawatts of power, which is enough to power 2,500 homes locally. For more information, please review the following link: <a href="http://www.countyofsb.org/pwd/pwrrwm.aspx?id=2934">www.countyofsb.org/pwd/pwrrwm.aspx?id=2934</a> .	5-2014





Level	Renewable Energy and Low Carbon Fuels Activities	Reported
Platinum	<ol style="list-style-type: none"> <li>2. The County helped install eight electrical vehicle charging stations in the City of Santa Barbara public parking lots at not cost to the city.</li> <li>3. In 2012, the County installed thirteen charging ports at six different electric vehicle charging station locations throughout Santa Barbara County for use by the public. These stations were provided free through a federal grant and matching funds from ChargePoint, the charging station manufacturer. The County investigated dozens of sites and chose these ones based on highest traffic and least cost install.</li> </ol>	5-2014



If a contract is approved, Coulomb Technologies will donate six electric vehicle charging stations to the City of Santa Barbara to be installed in city parking lots and replace older models that are rarely used, such as these in City Lot 7 that don't cater to hybrid cars. (Giana Magnoli / Noozhawk photo)





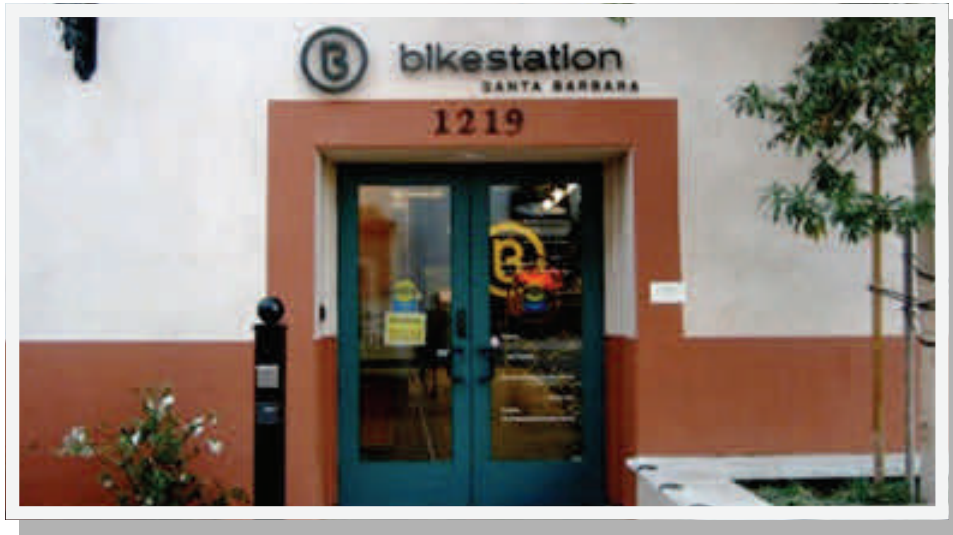
# Efficient Transportation Activity

Level	Efficient Transportation Activity	Reported
Silver	<ol style="list-style-type: none"> <li>1. The county has a Green Fleet Management Plan (GFMP) based on a series of programs to reduce greenhouse gas emissions by improving the overall efficiency of the county's vehicle fleet. The GFMP includes policy recommendations, proactive steps towards purchasing more fuel-efficient vehicles, and strategies and goals for fuel reduction. The plan is an on-going effort as Vehicle Operations Division continues to research and evaluate current and future vehicle and fuel technologies. One aspect of the GFMP is to "right size" the county's vehicle fleet, which means that, when possible, full-size sedans are replaced with mid-size sedans; mid-size sedans are being replaced with compacts; and trucks are being down-sized to the smallest trucks possible for the intended task. Another successful program in GFMP includes the use of re-refined oil. Whenever possible, Vehicle Operations is replacing the virgin petroleum products used in servicing of County-owned vehicles with re-refined oil products.</li> </ol>	5-2014

Level	Efficient Transportation Activities	Reported
Gold	<ol style="list-style-type: none"> <li>1. In 2010, the county launched a car share program in partnership with Zipcar in Isla Vista. The program makes cars available on an hourly rental basis to individuals who do not need a car for everyday travel. Individuals gain access to a car by joining an organization that maintains a fleet of cars in a network of locations.</li> <li>2. The County of Santa Barbara encourages employees to reduce their "drive alone" commuting by offering several different incentives under the Commuter Benefit Program. This could involve commuting by transit bus or van pool. This program is directed at those employees who commute into Santa Barbara from North County or from counties to the south of Santa Barbara. The benefit includes a county contribution of ten dollars towards a bus pass and allows County employees to purchase bus passes pre-tax. More information is available at: <a href="http://www.countyofsb.org/hr/default.aspx?id=11074">www.countyofsb.org/hr/default.aspx?id=11074</a>.</li> </ol>	5-2014



Level	Efficient Transportation Activities	Reported
Platinum	<ol style="list-style-type: none"> <li>1. The county also offers a Transportation Demand Management (TDM) program to encourage the use of alternative methods of commuting to work rather than driving alone to and from work. Employees earn up to two days of additional vacation each year if they use alternative transportation at least 80% of the days worked in a pay period. For more information, please visit: <a href="http://www.countyofsb.org/hr/default.aspx?id=11074">http://www.countyofsb.org/hr/default.aspx?id=11074</a>.</li> <li>2. The county offers a flexible work schedule for employees that incorporate telecommuting and modified schedules including 9/8/80, 4/10/40, or 3/12/80 work schedules.</li> <li>3. In 2009, County Planning and Development and Public Works staff worked with MTD staff to identify and fund the installation of benches and bus shelter facilities that best served MTD ridership. The MTD Shelter Improvement Project enhanced existing MTD services and provided additional bus stop locations in order to increase and expand public transportation opportunities for area residents thus decreasing their dependence on autonomous vehicles. The project was a cost-effective solution for reducing traffic both within Isla Vista and throughout the surrounding street network.</li> <li>4. In 2012, the County's Public Works Transportation Division drafted the Santa Barbara County 2012 Bicycle Master Plan to help guide the construction of new bicycle related infrastructure. New bikeway links identified in the adopted Bikeway Maps are now shown on the maps prepared for the Bicycle Master Plan. The Bicycle Master Plan also contains a table specific to each region in the county which lists each proposed bikeway link. The Transportation Division also distributes maps showing the adopted bike trails to the community. For more information, please visit: <a href="http://www.countyofsb.org/pwd/pwroads.aspx?id=39304">http://www.countyofsb.org/pwd/pwroads.aspx?id=39304</a>.</li> </ol>	5-2014





# Land Use and Community Design Activity

Level	Land Use and Community Activity	Reported
Silver	<p>1. In 2007, the Board of Supervisors adopted the Isla Vista Master Plan (IVMP). The IVMP contains many goals, policies, and development standards that promote infill development and alternative forms of transportation such as cycling, walking, and public transit. Isla Vista (IV) is located adjacent to the biggest job center within the county, UCSB. Promoting infill development in IV assists in placing new housing adjacent to the largest job center and keeps commuting down. The IVMP contains specific policies that address limiting parking options, encouraging the use of bicycles and walking as alternative modes of transportation, maintaining reduced automobile speeds to promote a safe environment for cyclists and walkers, public transit services that encourage ridership, and promoting a car share program. More information can be found: <a href="http://longrange.sbcountyplanning.org/planareas/islavista/islavista.php">http://longrange.sbcountyplanning.org/planareas/islavista/islavista.php</a>.</p>	5-2014

Level	Land Use and Community Activities	Reported
Gold	<p>1. In 2013, the Santa Barbara County Association of Governments (SBCAG) Board adopted the 2040 Regional Transportation Plan &amp; Sustainable Communities Strategy (SCS). The SCS sets out a plan to meet SBCAG's goal of a zero net increase per capita in greenhouse gas emissions from passenger vehicles by 2020. The SCS requires Metropolitan Planning Organizations to tie land use planning with transportation planning in order to reduce greenhouse gas emissions from passenger vehicles. The County of Santa Barbara's Board of Supervisors and representatives from the Planning and Development Department and Public Works Department participated extensively in the planning process to develop and implement the SCS. For more information, please visit: <a href="http://www.sbcag.org/uploads/2/4/5/4/24540302/publicdraft2040rtpscs-chapters.pdf">http://www.sbcag.org/uploads/2/4/5/4/24540302/publicdraft2040rtpscs-chapters.pdf</a>.</p> <p>2. Santa Barbara County started the Agricultural Planning program in 2005 to assist the county with agricultural land use decisions and resource protection. As a member of the Planning and Development team, the agricultural planner advises planning staff on development projects and policy matters affecting agriculture. Agricultural planners coordinate with the <u>Agricultural Commissioner's Office</u>, <u>Agricultural Advisory Committee</u>, county departments and other jurisdictions on land use issues affecting agriculture.</p>	5-2014





Level	Land Use and Community Design Activities	Reported
Platinum	<ol style="list-style-type: none"> <li data-bbox="345 212 1287 848">1. The county has created a planning advisory committee to address differing values and planning concerns of neighborhoods and communities in the county through unique policies. Planning and Development (P&amp;D) Long Range Planning Division staff interacts extensively with Board-appointed Planning Advisory Committees (PAC) through the update and adoption of various community plans. PAC members are selected based upon geographic areas, professional affiliations, community segments, and other interest groups that are representative of the community. The role of the different community plan area PACs may include receiving community input as well as reviewing and commenting on planning issues in the plan area, which will be used by county staff to draft the develop or update the community plan. PACs may also receive community input and provide an advisory function to the county regarding discretionary projects that affect their planning area. Long Range Planning Division staff also provide ongoing support for public and private development projects that implement the community plans through close cooperation with P&amp;D Development Review Division staff. Examples of current and ongoing community plan projects include the Gaviota Coast Plan, Summerland Community Plan, Mission Canyon Community Plan, and Eastern Goleta Valley Community Plan. For more information, please visit the following link: <a href="http://longrange.sbcountyplanning.org/landuse_element.php">http://longrange.sbcountyplanning.org/landuse_element.php</a>.</li> <li data-bbox="345 877 1287 1094">2. The county maintains a community-wide database of vacant and underutilized infill sites to monitor the community's growth and change. It also details market, governmental, and environmental factors which constrain housing production, and identifies actions to enhance housing production consistent with the Comprehensive Plan and State Housing Element Law. For more information, please visit the following link:<a href="http://longrange.sbcountyplanning.org/programs/housing/housing_element.php">http://longrange.sbcountyplanning.org/programs/housing/housing_element.php</a>.</li> <li data-bbox="345 1123 1287 1457">3. Over the last five years, County Public Works has been funding the construction of missing links in the Isla Vista sidewalk network. Over \$20 million of sidewalk improvements have been identified and prioritized, with improvements closest to the UCSB campus and the ocean designated as the highest priority. These improvements are intended to improve quality of life as well as support and encourage the pedestrian experience in Isla Vista. When feasible, new street trees and landscaping are installed along with the construction of new sidewalks. Thus far, missing sidewalks links and street trees have been installed on Sabado Tarde, Trigo Road, Sabado Tarde, El Nido Lane, Madrid Road, Picasso Road, Segovia Road, and Cordoba Road.</li> </ol>	5-2014







# Open Space and Offsetting Carbon Emission Activity

Level	Open Space Offsetting Carbon Emission Activities	Reported
Silver	<p>1. In 2000, the County's Public Works Department adopted a Street Tree Policy with a goal to provide a guideline for the replacement of existing street trees, designate suitable trees as replacements, and enable the county to cooperate with community groups to seek grants to sustain and nurture the county's urban forest. More information can be found: <a href="http://www.countyofsb.org/pwd/pwroads.aspx?id=3328">www.countyofsb.org/pwd/pwroads.aspx?id=3328</a>.</p>	5-2014

Level	Open Space Offsetting Carbon Emission Activities	Reported
Gold	<p>1. The County of Santa Barbara park system has 24 day use parks, two camping parks, 45 open spaces and 12 beach areas, for a grand total of 8,595 acres. To help preserve these resources, the Parks Division offers local non-profit groups, youth groups and schools a program to volunteer to clean up a designated beach or park area. The program is available year-round and the county will provide a program orientation and the necessary gloves and litter bags to haul trash from the site. The Division also offers Adopt-A-Park programs where people and organizations can purchase new trees as memorials to loved ones or plants and shrubs, such as Toyon or Nevin Barberry, that attract native bird species to contribute to the beauty of County parks. For more information, please visit: <a href="http://www.countyofsb.org/parks/parks01.aspx?id=7524">www.countyofsb.org/parks/parks01.aspx?id=7524</a>.</p> <p>2. The county's Agricultural Commissioner/Weights and Measure Department maintains a webpage that provides information on how to register as an organic producer, handler, or retailer as well as information about the Santa Barbara Certified Farmer's Markets. More information can be found at: <a href="http://www.countyofsb.org/agcomm/agcomm.aspx?id=44749">http://www.countyofsb.org/agcomm/agcomm.aspx?id=44749</a>.</p>	5-2014



Level	Open Space Offsetting Carbon Emission Activities	Reported
Platinum	<ol style="list-style-type: none"> <li data-bbox="342 212 1274 579">1. The County Board of Supervisors passed an Agricultural Buffer Ordinance that implements adopted Comprehensive Plan policies that assure and enhance the continuation of agriculture as a major viable production industry in Santa Barbara County through establishing development standards that provide for buffers between agricultural uses and new non-agricultural development. Agricultural buffers are intended to minimize potential conflicts between agricultural and adjacent land uses that result from noise, dust, light, and odor incidental to normal agricultural operations as well as potential conflicts originating from residential and other non-agricultural uses. More information can be found at: <a href="http://longrange.sbcountyplanning.org/programs/ag_buffer/AgBufferordinance.php">http://longrange.sbcountyplanning.org/programs/ag_buffer/AgBufferordinance.php</a>.</li> <li data-bbox="342 611 1274 1041">2. The county utilizes three zoning ordinances (Santa Barbara County Land Use and Development Code, Montecito Land Use and Development Code, and Coastal Zoning Ordinance) to carry out the policies of the Santa Barbara County Comprehensive Plan and Local Coastal Program by classifying and regulating the uses of land and structures within the County, consistent with the Comprehensive Plan and the Local Coastal Program. All three zoning ordinances contain Ridgeline and Hillside Development Guidelines that restrict grading and home building on hillsides as a way to enhance public safety, preserve visual protection, and preserve open space. For more information, please visit: <a href="http://sbcountyplanning.org/permitting/ldpp/auth_reg/ordinances.cfm#chapter35">http://sbcountyplanning.org/permitting/ldpp/auth_reg/ordinances.cfm#chapter35</a>.</li> <li data-bbox="342 1073 1274 1451">3. The county created an Agricultural Preserve Program to assist in the long term conservation of agricultural and open space lands. The program enrolls land in Williamson Act or Farmland Security Zone contracts whereby the land is enforceably restricted to agricultural, open space, or recreational uses in exchange for reduced property tax assessments. Participation in the program is voluntary. The Santa Barbara County Uniform Rules for Agricultural Preserves and Farmland Security Zones is the set of rules by which the county administers its Agricultural Preserve Program. The Agricultural Preserve Advisory Committee is responsible for administering the County's Agricultural Preserve Program. More information can be found at: <a href="http://www.countyofsb.org/agcomm/agcomm.aspx?id=11848">http://www.countyofsb.org/agcomm/agcomm.aspx?id=11848</a>.</li> </ol>	5-2014





# Promoting Community and Individual Action Activity

Level	Promoting Community and Individual Action Activities	Reported
<b>Silver</b>	<p>1. The Resource Recovery and Waste Management Division (RRWMD) in the Public Works Department administers the Green Business Program. The Program was started over 15 years ago and is a certification program that recognizes businesses that go beyond complying with applicable environmental regulations and that make voluntary changes in their facilities and operations in the key areas of energy and water conservation, solid and hazardous waste reduction and recycling, pollution prevention and transportation. The program is designed to educate businesses on how to incorporate resource conservation into their practices, make the public aware of businesses that are environmental stewards, and foster a positive relationship among governmental agencies, the business community, and the public. Certification is free. More information can be found at: <a href="http://www.greenbiz.org">www.greenbiz.org</a>.</p>	<b>5-2014</b>

Level	Promoting Community and Individual Action Activities	Reported
<b>Gold</b>	<p>1. Since 1999, the RRWMD administers the Community Hazardous Waste Collection Center, located on the campus of UCSB for the acceptance of small quantities of hazardous waste. Businesses that qualify as a Conditionally Exempt Small Quantity Generator, as well as households, may dispose of a variety of hazardous waste such as antifreeze, batteries, motor oil, paints, solvents, cleaners, and fluorescent lights. Antifreeze, batteries, motor oil, and latex paint are accepted at the Santa Ynez Valley Recycling and Transfer Station, while batteries are accepted at the South Coast Recycling and Transfer Station. The RRWMD also holds a one- day event for the collection of hazardous waste and electronics in the Santa Ynez Valley every April and October and in New Cuyama every October. For more information, please visit: <a href="http://www.lessismore.org/">http://www.lessismore.org/</a>.</p> <p>2. The RRWMD publishes a Recycling Resource Guide for Santa Barbara County in both English and Spanish, available on the RRWMD recycling website: <a href="http://www.lessismore.org/">http://www.lessismore.org/</a></p>	<b>5-2014</b>



Level	Promoting Community and Individual Action	Reported
Platinum	<ol style="list-style-type: none"> <li data-bbox="350 222 1273 884">1. To develop an Energy and Climate Action Plan (ECAP), the county engaged the public in a process that provided community education about climate action planning and related implications for land use policy in Santa Barbara County. A main goal of the public participation process was to build local capacity for project implementation. Methods for education and gathering community input during the planning process included a community visioning workshop, participation in a community event, four facilitated stakeholder meetings, and an online survey. The county held a total of four stakeholder meetings in northern and southern Santa Barbara County to help development develop measures, implementing actions, and programs included in the ECAP. The first three meetings provided interested stakeholders the opportunity to offer feedback on the proposed measures for the draft Energy and Climate Action Plan. The fourth meeting was held to reintroduced draft measures from the ECAP in the context of three separate approaches (voluntary, phased, and mandatory) and invited participants provided feedback on the approach most appropriate for Santa Barbara County. For more information, please visit: <a href="http://longrange.sbcountyplanning.org/programs/climateactionstrategy/climateaction.php">http://longrange.sbcountyplanning.org/programs/climateactionstrategy/climateaction.php</a>.</li> <li data-bbox="350 919 1273 1192">2. The county distributed an online survey that asked 35 questions about household energy use, sustainability practices, and driving habits to receive community feedback on sustainability, energy efficiency and climate change. The information provided in the survey results were used to help develop the measures, implementing actions, and programs included in the ECAP. For more information, please visit: <a href="http://longrange.sbcountyplanning.org/programs/climateactionstrategy/climateaction.php">http://longrange.sbcountyplanning.org/programs/climateactionstrategy/climateaction.php</a>.</li> <li data-bbox="350 1228 1273 1575">3. The County of Santa Barbara, in collaboration with staff from University of California, Santa Barbara and the Cities of Carpinteria, Santa Barbara, and Goleta are working with a consultant to model sea level rise and other coastal hazards to identify planning level changes in future Santa Barbara County coastal erosion, County coastal flooding, and fluvial flooding extents looking at Carpinteria Creek. The results from this project will ultimately be used to promote policies and programs that mitigate impacts from coastal hazards. <a href="http://longrange.sbcountyplanning.org/programs/Coastal%20Resiliency%20Project/coastalresiliency.php">http://longrange.sbcountyplanning.org/programs/Coastal%20Resiliency%20Project/coastalresiliency.php</a>.</li> </ol>	5-2014







A \$5.2 million array of solar panels sits on the hillside behind the Santa Barbara County Jail, part of the county's effort to reduce its carbon footprint and energy costs. (Tom Bolton / Noozhawk photo)







# INSTITUTE FOR LOCAL GOVERNMENT<sup>SM</sup>

*Promoting Good Government at the Local Level*

© 2014 by Institute for Local Government  
1400 K Street, Suite 205  
Sacramento, CA 95814  
916-658-8208  
[www.ca-ilg.org](http://www.ca-ilg.org)

