

Cap & Trade... What does it mean for **my** community?

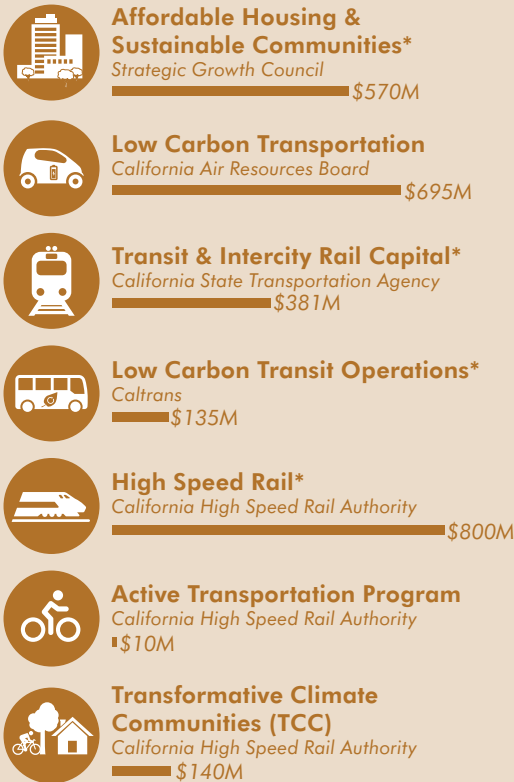
And how does Cap & Trade become the Greenhouse Gas Reduction Fund?

\$2.614B
Total funding available in 2013-16

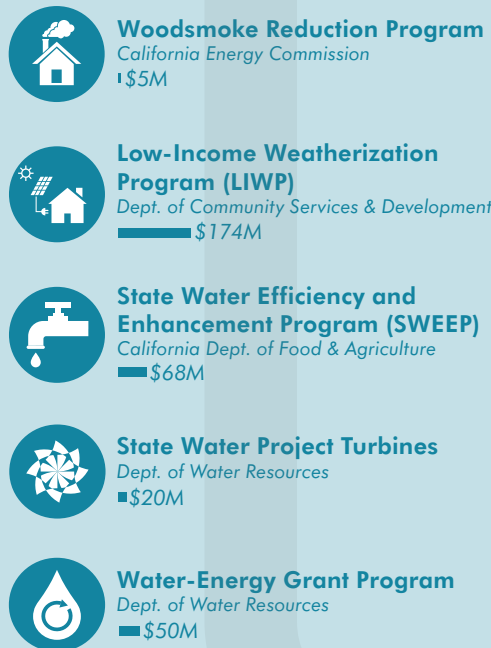
25%
Percent of funds allocated to Disadvantaged Communities

14
Total State agencies administering programs

TRANSPORTATION AND SUSTAINABLE COMMUNITIES



CLEAN ENERGY AND ENERGY EFFICIENCY



For program details:
www.ca-ilg.org/capandtrade

*Continuous appropriations

NATURAL RESOURCES AND WASTE DIVERSION

