



Opening community access to schools and other public properties through Joint Use

Robert Ogilvie, PhD

December, 2011

Public Health Law & Policy

We partner with state and local leaders to improve health in all communities, especially the underserved.

We do this by researching legal and policy questions, drafting policy language, and training community leaders to put these ideas to work.



The Fine Print

The information provided in this seminar is for informational purposes only, and does not constitute legal advice. Public Health Law & Policy does not enter into attorney-client relationships.

The primary purpose of this training is to address legal and/or policy options to improve public health. There is no intent to reflect a view on specific legislation. PHLP incorporates objective non-partisan analysis, study, and research in all our work.













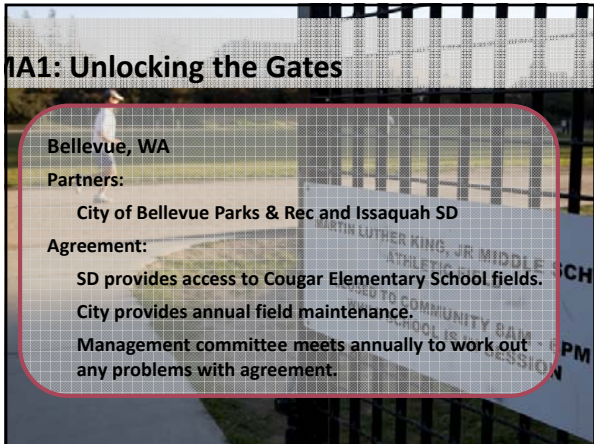
Showing the public the value and accessibility of our public institutions

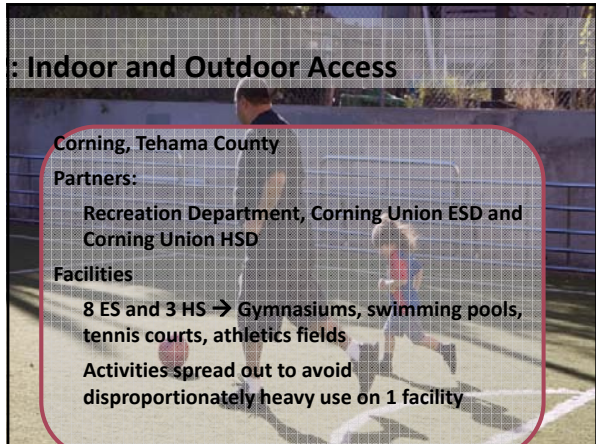


MA1: Unlocking the Gates



MA1: Unlocking the Gates





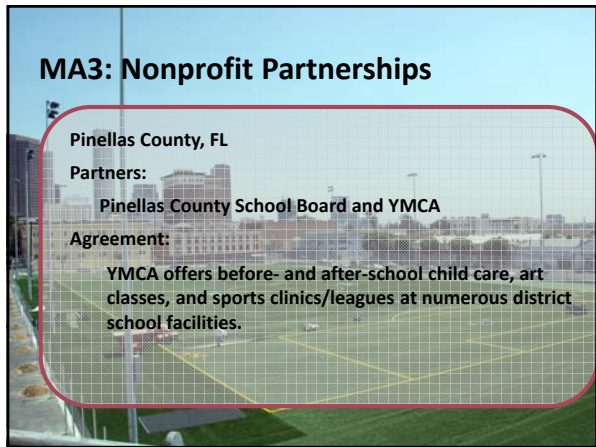
Indoor and Outdoor Access

Corning, Tehama County

Partners:
Recreation Department, Corning Union ESD and Corning Union HSD

Facilities:
8 ES and 3 HS → Gymnasiums, swimming pools, tennis courts, athletics fields

Activities spread out to avoid disproportionately heavy use on 1 facility



MA3: Nonprofit Partnerships

Pinellas County, FL

Partners:
Pinellas County School Board and YMCA

Agreement:
YMCA offers before- and after-school child care, art classes, and sports clinics/leagues at numerous district school facilities.



MA4: Reciprocal Access

Seattle, WA

Partners:
City of Seattle Parks & Rec and Seattle School District No. 1

Facilities:
Athletic fields and complexes
Swimming pools
Community centers













