



SESSION PROCEEDINGS

CAP AND TRADE and CLIMATE INVESTMENTS: A Roundtable on Health, Transportation and Energy Efficiency in the Inland Empire

**September 19, 2016
Monday: 1:00 – 4:00 pm
INTECH Training Center
9400 Cherry Avenue, Building A
Fontana, CA 92335**

 **INSTITUTE FOR LOCAL GOVERNMENTSM**
Promoting Good Government at the Local Level

SESSION PROCEEDINGS



About this Dialogue >>

The Institute for Local Government is supporting state, regional and local leaders in the Inland Empire who are working to realize the promise of a more healthy, equitable and prosperous future for the 4.3 million residents of the region.

Recent actions by the California legislature and the administration of Governor Brown promise to accelerate state efforts to address climate change. New state policies and programs will bring an increased focus on the health and economic benefits of investments to reduce greenhouse gas emissions. These investments can be particularly beneficial for residents in disadvantaged communities and people most affected by the health consequences of pollution, including many in the Inland Empire.

The Cap and Trade and Climate Investments Roundtable held September 19, 2016 in Fontana provided a venue for key local and regional officials and community leaders to share information, ideas and recommendations for action with leaders from state government. The Dialogue focused on opportunities to harness the state's climate investments to advance the health and prosperity of the residents of the region.

The Roundtable was hosted and convened by State Senator Connie M. Leyva and organized by the Institute for Local Government (ILG). ILG is the research and education arm of the League of California Cities, the California State Association of Counties, and the California Special Districts Association.

Sponsors included the League of California Cities, the San Bernardino Associated Governments (SANBAG), the Western Riverside Council of Governments (WRCOG), the Inland Empire Economic Partnership (IEEP), the American Lung Association in California – San Bernardino, Southern California Edison, SoCalGas and the City of Rancho Cucamonga.

Support for the Roundtable was provided in part through a grant from The California Endowment.



Institute Team



Steve Sanders directs the Sustainable Communities Program at the Institute for Local Government, which helps local officials identify and apply policies and best practices that foster and maintain a high quality of life for their residents on an ongoing basis. Before joining the Institute, Steve ran a private consulting firm serving foundations and non-profit organizations on issues related to sustainable development, fiscal policy and governance reform. Steve has served as Chief of Staff to a California State Assembly Member and Senior Consultant for the California Senate Office of Research. Prior to his legislative career, Steve was an urban planner with state and local government.



Sarah Rubin leads the Public Engagement Program at the Institute for Local Government. She has worked on a wide variety of policy issues including immigrant integration, utilities, public health, redistricting, disaster preparedness and water. Sarah has her M.A. in Conflict Analysis and Resolution from George Mason University in Fairfax, Virginia. Sarah is an accomplished community mediator and has led conflict resolution centers in California and Brooklyn.



Julia Lave Johnston is a Sustainability Program Manager at the Institute for Local Government leading the Land Use and Healthy Neighborhoods components of the Institute's Sustainable Communities Program. Previously she was Director of the Land Use and Natural Resources program at UC Davis Extension. She also served as Deputy Director for Planning Policy in the Governor's Office of Planning and Research (OPR), where she coordinated the Strategic Growth Council during its first two years. Prior to her time at OPR, Julia worked at the California Research Bureau (CRB), the Local Government Commission (LGC); and the Population Council, an international non-profit organization in New York City.



Narayani (Nina) Chaurasia served as a Ronald O. Loveridge Fellow with the Institute for Local Government. She recently graduated from the University of California, Riverside with a Bachelor of Arts degree in Political Science with a concentration in International Relations. Nina has experience in transportation policy, environmental sustainability, and local government. She previously aided the Southern California Association of Governments in the development of the Regional Transportation Plan/Sustainable Communities Strategies and helped with public outreach.

Cap and Trade in the Inland Empire: A Leadership Roundtable & Community Dialogue

Welcome and Introductions

- *Senator Connie M. Leyva, Roundtable Host and Convener*

Agenda Review

- *Steve Sanders and Sarah Rubin, The Institute for Local Government*

Section I: Leadership Roundtable

A. Setting the Stage – State Investments and Initiatives

2016 Legislative Session Overview and Key Issues – *Senator Connie M. Leyva*
Strategic Growth Council Initiatives – *Gail Goldberg, Public Member*
California Air Resources Board Initiatives – *Hector De La Torre, Public Member*

Participant Exercise: How might the state investments and initiatives you've just heard about apply to you or your agency locally or regionally?

B. Setting the Stage – Regional and Local Initiatives

Heavy-Duty Zero Emission Vehicle Truck Demonstration Project – *Duane Baker, SANBAG and Andy Swanton, eTrucks at BYD*

San Bernardino Regional Energy Partnership – *Becky Estrella, SoCalGas and Joanna Chang, SCE*

CAPtivate: A Healthy Riverside County – *Ben Benoit, City Council, City of Wildomar and Jennifer Ward, WRCOG*

Healthy RC – *L. Dennis Michael, Mayor, City of Rancho Cucamonga and Deborah Allen, Management Aide – Sustainability, City of Rancho Cucamonga*

Program

Section II: Community Dialogue

A. Community Perspectives on Health, Prosperity and Climate Investments in the Inland Empire

- *Paul Granillo, President and CEO, Inland Empire Economic Partnership*
- *Corie Goldman, Advocacy Director, American Lung Association in California – San Bernardino*

B. Table Discussion with Local, Regional and State Participants

Question: How can the state reinforce local and regional initiatives to address climate, health, equity and prosperity in the Inland Empire?

- *Roving Facilitators – Steve Sanders & Sarah Rubin, the Institute for Local Government*
- *State Representatives will circulate among the tables to allow time for each to interact with the Dialogue participants*

Action Steps: What top 3 actions should regional agencies, local governments, and/or the state take in the near term to advance health, equity and prosperity in the Inland Empire through climate investments?

- *Each table will select a recorder to capture the top 3 ideas generated by the group.*

Report Out by Groups – top 3 ideas for near-term action

Closing Remarks – Senator Connie M. Leyva

Purpose of the Roundtable & Dialogue

- **Learn** the latest about California’s Cap and Trade program from key state leaders.
- **Share** perspectives about exciting local and regional initiatives in the Inland Empire that are using climate investments to create more prosperous and healthy communities.
- **Connect** with others working on issues of interest and concern to your community.
- **Lead** with others in the region by offering your ideas for actions that local, regional and state agencies can take to advance health and prosperity in the Inland Empire.

Setting the Stage: State Investments and Initiatives



2016 Legislative Session Overview and Key Issues

Senator Connie M. Leyva represents the 20th State Senate District. Senator Leyva is committed to improving California's schools, environment and communities, as well as creating quality jobs throughout the 20th State Senate District and California. She firmly believes that California families benefit most when we invest in and help strengthen small businesses and other job drivers that create good paying jobs in our local communities. Following in that tradition of community service and action to improve the lives of others, she was elected in 2004 as the first woman President of the California Labor Federation, representing more than 2.1 million workers throughout the state. She also currently serves on the Senate Select Committees on California-Mexico Cooperation, Manufactured Home Communities, Ports & Goods Movement and Women and Inequality: Strategies to Promote Opportunity.



Strategic Growth Council Initiatives

Gail Goldberg was appointed by former Assembly Speaker Toni Adkins to serve as a Public Member of the Strategic Growth Council. She was named Executive Director of the Urban Land Institute - Los Angeles in June of 2011. Ms. Goldberg brings to the table not only her many years leading the planning departments of two of the world's most significant cities, but also many years of service to ULI. Goldberg was Director of Los Angeles City Planning Department from February 2006 through August 2010. She was responsible for organizing and directing the policies and activities of the City's Planning Department, including the development, maintenance and implementation of the City's General Plan as well as a range of other special zoning plans.



California Air Resources Board Initiatives

Hector De La Torre serves on the California Air Resources Board (CARB) as a gubernatorial appointee, where he focuses on goods movement, mitigation in impacted communities, and bringing the benefits of new technologies to these communities. De La Torre is the Executive Director of the Transamerica Center for Health Studies, a nonprofit focused on empowering consumers and employers to achieve the best value and protection from their health coverage. De La Torre is also a member of the Board of Trustees at Occidental College (his alma mater) in Los Angeles and the Board of L.A. Care. De La Torre served as a State Assembly Member for California's 50th District from 2004-2010. Prior to that, he was Mayor and Councilmember in his hometown of South Gate.

Setting the Stage: Local and Regional Initiatives



The Heavy-Duty Zero-Emission Truck Development Project for Intermodal and Warehouse Facilities is demonstrating 27 all-electric zero emission yard and service trucks, the two most commonly used trucks at freight locations in the US. The project is funded by the California Air Resources Board and is led by SANBAG, with support from BYD as the technology provider and BNSF Railway and Daylight Transport as the technology demonstrators.

Duane Baker, SANBAG and Andy Swanton, eTrucks at BYD



Duane Baker is the Deputy Executive Director for San Bernardino Associated Governments, commonly known as SANBAG. Duane's responsibility at SANBAG includes overseeing SANBAG's operations, projects and programs related to its role as a Council of Governments and its regional sustainability efforts. In addition, he is responsible for Air Quality and Mobility Programs operated by SANBAG. Duane has 30 years of experience in the local government management profession serving cities in Riverside, San Bernardino and Los Angeles counties. Duane received his Bachelors in Political Science/Public Service from the University of California, Riverside and his MPA from Cal State Fullerton. He is a native of the Inland Empire.



Andy Swanton is the Business Development Director for BYD's North American truck team. In this role Andy has overseen the development of 6 new, all-electric truck models for urban delivery, goods movement, and refuse applications, securing contracts for a combined value of over \$30 million dollars. Prior to BYD, Andy worked in management roles for Danaher Corporation. Andy was trained as a civil engineer and has experience designing large scale water treatment systems. He has engineering degrees from Tufts and MIT and a MBA from Harvard.

Setting the Stage: Local and Regional Initiatives



Technology

Conventional Trucks



Diesel Yard Hostlers



Diesel Service Trucks

Zero Emission Trucks



Electric Yard Hostler



Electric Service Truck



CONFIDENTIAL

5



Timeline and Emissions Reductions

Milestone	Date
Preliminary Award	January 2016
Contract	June 2016
Phase 1 Truck Deliveries & Charger Installation	December 2016
Phase 1 Demonstration	January 2017 – January 2018
Phase 2 Truck Deliveries	December 2017
Phase 2 Demonstration	January 2018 – January 2019
Final Report	April 2019



BYD's Lancaster Facility

Emission	Reduction/yr
Metric Tons CO2e	1,745
Tons of NOx	0.80
Tons ROG	0.04
Tons PM10	0.04
Tons of WER (Weighted Annual Surplus)	1.65

Equivalent Carbon Emissions of per year:
 -Replacing 369 passenger cars
 -184 homes' energy use
 -1,652 acres of forests



CONFIDENTIAL

4

Setting the Stage: Local and Regional Initiatives



The San Bernardino Regional Energy Partnership is comprised of 14 member cities, SANBAG, Southern California Edison, and SoCalGas. The Partnership program provides technical assistance, financing options, and enhanced incentives to promote local leadership in energy efficiency and sustainability. The partnering cities will achieve their goals by retrofitting their municipal facilities to be more energy efficient and by promoting marketing, education, and outreach to the community.

Becky Estrella, SoCalGas and Joanna Chang, SCE



Becky Estrella has been employed with Southern California Gas Company for 20 years, as a Local Government Partnership Program Manager, a Public Affairs Manager and a Senior Account Executive serving some of the utility's largest commercial and industrial natural gas customers. She has also been an Associate Product Manager in Consumer Markets at Sempra Energy Solutions, a former regulated company within Southern California Gas Company's Parent Company, Sempra Energy. Becky is currently a Supervisor for Local Government and Institutional Partnerships working with local governments, higher education and state agencies.



Joanna Chang is Program Manager of the Energy Efficiency Partnership Program for Southern California Edison, managing partnerships with over 30 cities and overseeing energy efficiency funding for the City of Redlands, Desert Cities Energy Partnership, Western Riverside Energy Leader Partnership, and the San Bernardino Regional Energy Partnership. Prior to working as a Program Manager, Joanna also worked as an Account Executive at the Business Customer Division, conducting energy audits and promoting Energy Efficiency technology solutions and programs to commercial customers in the Inland Empire. She has over 10 years of experience in the field of energy efficiency.

Local Government Partnership Overview

Local Government Partnerships: Are collaborative partnerships amongst the Investor-Owned Utilities (IOUs), implementing organizations, city and county partners that provide services and programs which promote energy-efficiency and sustainability to local governments and their communities.

Partnership Goals:

1. Increase energy efficiency in local government facilities.

- ✓ Enable local governments to lead by example by making their own facilities energy efficient.
- ✓ Help with municipal facility audits to identify retrofit opportunities.

2. Support the CA Long Term Energy Efficiency Strategic Plan.

- ✓ Helps to meet AB32/greenhouse gas reduction goals.
- ✓ Provides CPUC regulatory guidance.

3. Support/promote IOU core programs.

- ✓ Uses the full range of integrated demand-side management program and services, including energy efficiency rebates for residential & business customers, demand response programs, solar training.
- ✓ Expands local government policies and building capacity.



2

Partnership EE Goals & Accomplishments

• Energy Efficiency Savings Goals:

- Electric: 525,000 kWh/99 kW (2015); 377,053 kWh/22 kW (2016)
- Natural Gas: 4,500 Therms (2015); 29,754 Therms (2016)

• Accomplishments To Date:

- 10 out of 14 cities passed Resolutions to join Partnership.
- Community outreach support:
 - Rancho Cucamonga Energy Event
 - Rancho Cucamonga Community Forum & Sustainability Expo Workshop
 - Rialto Pollution Prevention Fair
 - Fontana Master Plan Event
 - Holiday Lights Exchange Event (multiple cities)
- Provided Technical Assistance through Energy Audits to 2 Cities.
- Coordinated SCE's Direct Install Program which have resulted in 130,500 kWh savings.
- Completed one natural gas project (pool cover) with Twentynine Palms resulting in 3,000 therms saved, with projects in pipeline with Chino Hills & Highland.
- Partnership is working with SoCaIREN and several cities with developing EE projects.



3



Supporting California local governments

Beacon Champion



Beacon Program Champion

- Include several councils of government, special districts and foundations. Through SEEC, ILG works with Beacon Champions to support and encourage the activities of cities and counties participating or considering participation in the Beacon Program.

SANBAG members participating in the Beacon Award Program include:

- [Town of Apple Valley](#)
- [City of Rancho Cucamonga](#)
- [City of Redlands](#)



6



Partnership Resources

The following resources are available:

SANBAG-Implementing Partner
 SoCalGas/SCE Partnership Program Managers
 SoCalGas Account Executives/SCE BCD Reps
 SoCalGas Public Affairs Managers

SoCalGas:
 Becky Estrella
 Energy Programs Supervisor
 (909) 335-7992
Bestrella@semprautilities.com

SCE:
 Joanna Chang
 Program Manger
 (626) 302-0644
Joanna.chang@sce.com

Jeff Lawler
 Program Manager
 (213) 244-4523
JLawler2@semprautilities.com

SANBAG:
 Nicole Soto
 SBREP Management Analyst
nsoto@sanbag.ca.gov

7

Setting the Stage: Local and Regional Initiatives

WRCOG's Subregional Climate Action Plan (CAPtivate) aims to reduce GHG emissions 15% by 2020 and 49% by 2035. To address public health issues while simultaneously advancing climate action planning in the region, the CAPtivate program assesses the health co-benefits of strategies to reduce greenhouse gases. A web-based GHG Monitoring and Health Assessment Tool helps decision makers evaluate the health outcomes of changes in air quality, physical activity and the built environment, helping guide jurisdictions in implementing effective policies and strategies to improve public health and mitigate climate change.



Ben Benoit, City of Wildomar and Jennifer Ward, WRCOG



Ben Benoit was elected to the Wildomar City Council in 2010 and served as Mayor Pro Tem in 2011 and Mayor in 2012. Council Member Benoit is currently Chair of the Western Riverside Council of Governments (WRCOG) and serves on the Riverside County Transportation Commission (RCTC), where he has been a strong supporter of helping further Metrolink's reach into Riverside County. He sits on the Perris Valley Line ad hoc committee, and was instrumental in extending this commuter rail line into Downtown Perris. He also serves as Vice Chair of the South Coast Air Quality Management District, and is a member of the Western Riverside County Regional Conservation Authority (RCA) and Vice-Chair of Riverside County Habitat Conservation Agency (RCHCA). Council Member Benoit understands the need to meet Federal mandates while supporting local businesses.



Jennifer Ward is the Director of Government Relations for the Western Riverside Council of Governments (WRCOG). She currently oversees a team responsible for addressing the economic development, sustainability, and quality of life goals for WRCOG's member jurisdictions through the implementation of various initiatives. Jennifer leads WRCOG's efforts to build strong relationships with both the local government and private sector, and communicate the Agency's priorities to its partners throughout Southern California and the state. Her recent accomplishments include the launch of WRCOG's \$1.8 million BEYOND program providing funding for municipalities to implement economic development, transportation, and public health projects. Jennifer received her Bachelor of Arts Degree in Environmental Analysis, Society Development and Policy from Claremont McKenna College.

CAPtivate: A Healthy Western Riverside County

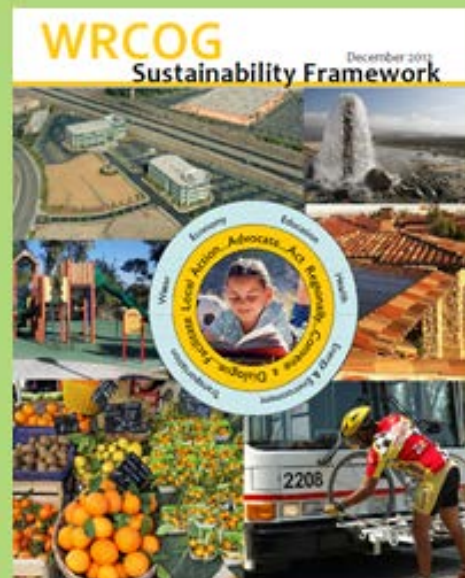


Inland Empire Climate
Investments Roundtable

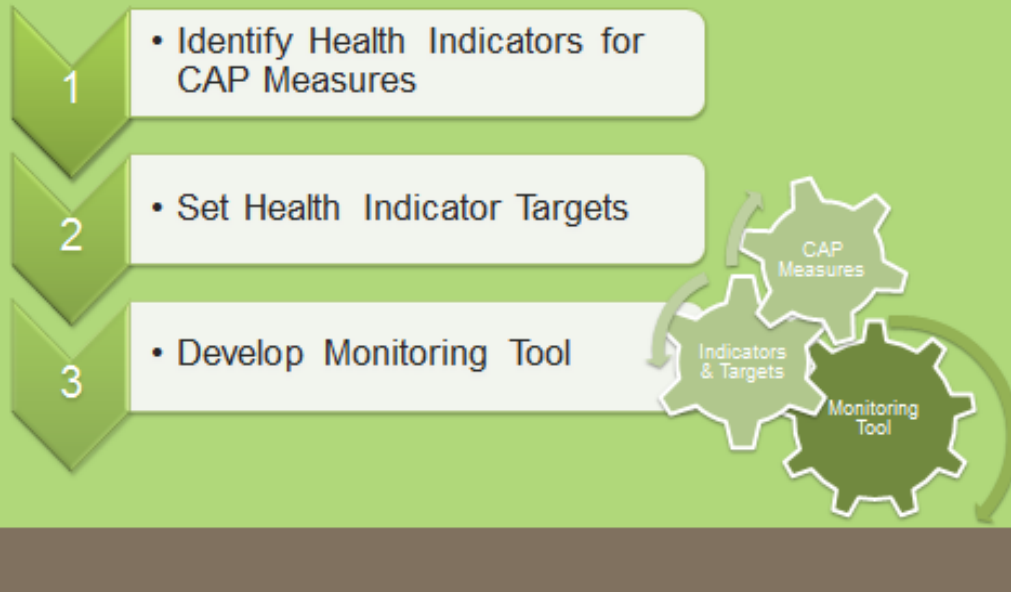
September 19, 2016

Project Background

- Sustainability Framework prioritizes six areas:
 1. Health
 2. Economic Development
 3. Education
 4. Transportation
 5. Water & Wastewater
 6. Energy & Environment



Integrating Health into the Subregional CAP

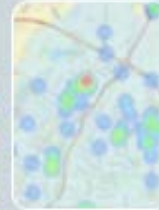


Subregional CAP

- Integrates climate adaptation & resiliency strategies
 - Extreme Heat
 - Drought
 - Wild Fire
 - Flooding
- Highlights community benefits
 - Health
 - Energy
 - Economy
 - Resources
 - Mobility



Priority Health Indicators



Health Status

- Adult health status

Mortality

- Heart disease
- Chronic lower respiratory disease
- Diabetes

Asthma

- Asthma prevalence
- Asthma hospitalizations

Weight & Physical Activity

- Adult physical activity
- Adult obesity
- Child body composition

Environ.

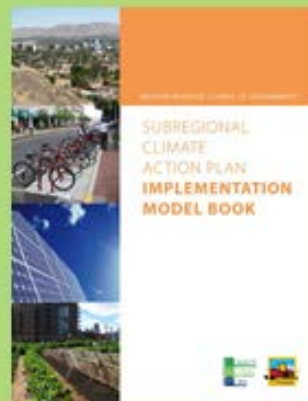
- Air quality
- Collisions with pedestrians and cyclists

Built Environ.

- Street connectivity
- Park level of service
- Retail Food Index

Implementation Tools

- Model Code, Policies & Practices Book
- BEYOND Local Assistance Fund
 - Noncompetitive grants
 - Fixed funding allocation to member agencies based on population count and/or agency structure
 - Round one projects total ~\$1.8 million



Setting the Stage: Local and Regional Initiatives



Healthy RC has been a successful City-community partnership since 2008, receiving state and national recognition for connecting community health and environmental sustainability. The City is completing a Sustainability Action Plan to chart a course for the future as a sustainable community. Extensive public input has helped identify and prioritize key sustainability initiatives important to Rancho Cucamonga residents. The principles of the Healthy RC can be seen with projects such as the proposed Empire Yards, which aims to transform 10 acres of parking into a mixed-use, transit-oriented development at the Rancho Cucamonga Metrolink Station.

Mayor L. Dennis Michael and Deborah Allen, City of Rancho Cucamonga



L. Dennis Michael was elected Mayor of the City of Rancho Cucamonga in 2010 and again in 2014. Prior to being elected Mayor, he was first elected to City Council in 2004 and then again in 2008. During his career, Mayor Michael led the development of the Rancho Cucamonga Fire Protection District as Fire Chief for 19 years, and guided the organization through the growth and development from a small town into a city of over 170,000 residents. Mr. Michael is currently President of the League of California Cities Statewide Board of Directors. Mayor Michael also represents the City of Rancho Cucamonga on the San Bernardino County Associated Government's (SANBAG) Board of Directors where he serves as the Board's past President, as well as being a member of SANBAG's General Policy, Metro Valley and Commuter Rail/Transit Committees. Dennis also serves on the Inland Empire Economic Partnership Board of Directors and the state's City, County School Partnership.



Deborah Allen joined the City of Rancho Cucamonga in January 2014 as a Management Aide-Sustainability in the City Manager's Office. Deborah's accomplishments in Rancho Cucamonga include installing of 1.8 Megawatts of solar power at five municipal facilities, receiving the "Cool California City" designation for Rancho Cucamonga, and receiving a Beacon Platinum Level Spotlight Award from the Institute for Local Government. Deborah is also involved in the development of Rancho Cucamonga's first Sustainability Action Plan. Prior to joining Rancho Cucamonga, she worked for the City of Redlands as a Senior Administrative Analyst, the City of San Bernardino as an Environmental Programs Manager and the City of Ontario as a Senior Environmental Technician. Deborah holds a Bachelor of Science degree from the California State Polytechnic University, Pomona.

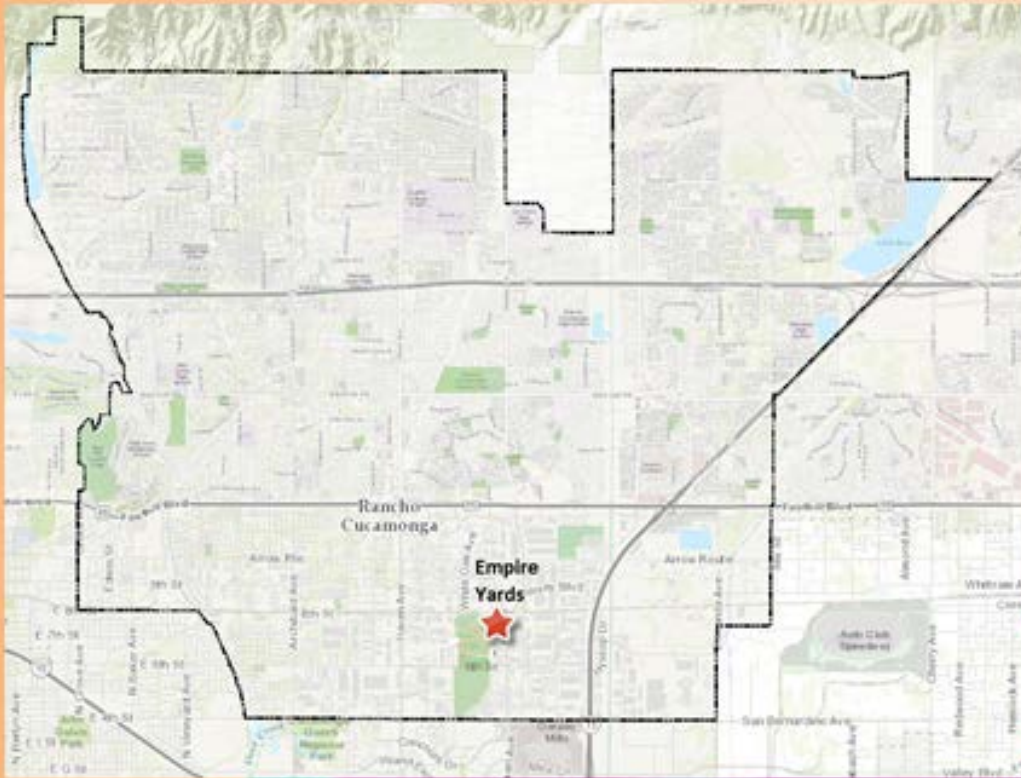


Sustainability Action Plan - Community Engagement



How important is it that you and your family have a clean and healthy environment to live in?





Proposed Empire Yards Transit Village



SECTION 2: COMMUNITY DIALOGUE

Community Perspectives on Health, Prosperity and Climate Investments in the Inland Empire

- *Paul Granillo, President and CEO, Inland Empire Economic Partnership*
- *Corie Goldman, Advocacy Director, American Lung Association in California – San Bernardino*

How can the state reinforce local and regional initiatives to address climate, health, equity and prosperity in the Inland Empire?



Paul Granillo became President & CEO of Inland Empire Economic Partnership in 2010. He also serves as Chair of Mobility 21, a coalition that pursues regional solutions to transportation challenges, as Chair of the California Stewardship Network and as a sitting member of the Regional Economic Alliance Leaders of California. Additionally, Granillo serves on the Southern California Association of Governments Global Land Use and Economics Committee and sits on the Board of Directors for The Community Foundation serving Riverside and San Bernardino counties, and Cal State San Bernardino's Foundation Board. A native of the Inland Empire, Granillo was born and raised in Redlands. He received a B.A. from California State University San Bernardino, a Master of Divinity from St. John's Seminary in Camarillo and a Licentiate in Canon Law from the Catholic University of America in Washington, D.C.



Corie Goldman is an Advocacy Director for the American Lung Association of California in San Bernardino. Mrs. Goldman has more than nine years of advocacy and community organizing experience working on tobacco and other health prevention campaigns. In her role with the American Lung Association, Mrs. Goldman works closely with community members to help advocate for change and advance healthy policies in their local communities to improve lung health and air quality.

Small-Group Table Discussions

Guiding Question:

How can the state reinforce local and regional initiatives to address climate, health, equity and prosperity in the Inland Empire?

Action Steps:

What 3 steps should regional agencies, local governments and/or the state take in the near term to advance health, equity and prosperity in the Inland Empire through climate investments?

Top 3 Ideas from Each Group Discussion

Table 1

1. Equity – EJ is a serious issue. San Bernardino County has the worst air. There should be more and greater assistance to these communities so they do get more funds for the disadvantaged communities of color.
2. Track the money. Form a committee/local center with more transparency. Funding for small businesses and non-profit organizations and not just larger corporations.
3. Funding for infrastructure, mixed-use, housing. Bring work to where people live. Sustainable communities that have energy efficiency in the planning stages and not as an afterthought.

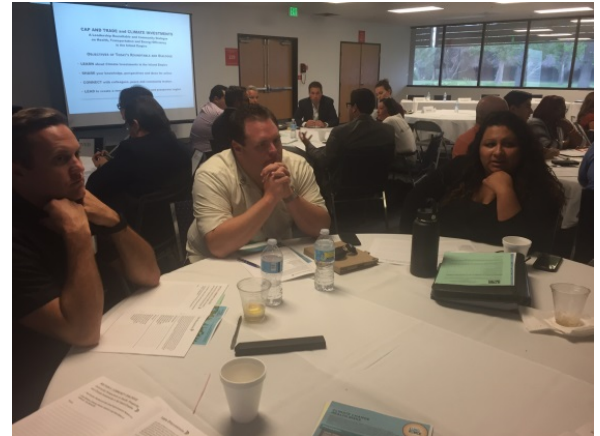


Table 2

1. Encourage Government bodies to look for collaboration: be creative in that process and make it simple.
2. People don't know what GHGs are and we should make it tangible. For example, "we did this and this was the result." Set incremental goals in a way that can be measured and explained in a way that the average person understands.
3. Educate the younger generation in schools in marketing and visualization. We mentioned a story-board. That way the younger generation can see the difference. Quick marketing ads that are about 20-30 seconds help since we are involved in such a fast-paced environment.

Suggested Next Steps

Continue to look for options for funding through the cap-and-trade program beyond AHSC.

Work together in Western Riverside County to develop a "pipeline" of potentially eligible projects.

Work with local and state leaders to adjust guidelines to remove disadvantages placed on inland Southern California.

- Jennifer Ward,
Western Riverside Council of Governments

Top 3 Ideas from Each Group Discussion

Table 3

1. Local leaders need to advocate for changes to the SGC guidelines to reflect realities of rural communities:
 - Take into account household size
 - Re-do definition of high-quality transit area
 - Unique guidelines for suburban areas
 - Difficult to compete against high density areas – get in the game!
2. Take advantage of Transformational Climate Communities program to build in requirements to help inland region:
 - Exciting new opportunity for funding
 - Use planning strategies and leverage funds to support jobs and health in the region – healthy economy and healthy environment
3. Local leaders work with state leaders to strengthen applications by building more partnerships and build partner approach into applications:
 - Partner with cities, transportation agencies, non-profit developers, health agencies, air district; all can bring resources to the table



Table 4

1. Shape partnership of public and private entities.
2. Greater familiarity with programs – have grantees share their successes and problems.
3. Support for coalition building.

Suggested Next Steps

Set up a follow-up call for attendees with more information on the next round of Strategic Growth Council funding guidelines.

Provide information about the new Transformational Climate Communities Program.

- Corie Goldman,
American Lung Association
in California – San
Bernardino

Top 3 Ideas from Each Group Discussion

Table 5

1. Anticipate what the future will be:
 - Jobs
 - Transportation
 - Infrastructure – parking, motivate use of public transportation, less cars
2. Save parking lots for future vertical parking structures
3. Start to find out how to deal with the psychological desire for vehicles.
 - Cost prohibitive – parking reduced, increase in cost
 - Re-look at car fees – registration, based on miles driven, age/type of car

Table 6

1. Recognize various characteristics where urban and suburban areas differ. Develop suburban criteria such as eliminating the public transit frequency standard.
2. Incorporate mixed use and provide services. Prioritize projects that have a health component.
3. Increase transit opportunities such as light rail to large destinations like the Ontario Airport.

Suggested Next Steps

Work with the legislature and others to fund transformational projects rather than just reinforcing projects. In other words, fund projects to encourage GHG reductions in areas that currently don't support higher density rather than simply funding projects where market forces are already dictating higher density land uses.

Continue investments to help develop new technologies, such as electric yard trucks, for broader commercial application. Develop incentives specifically focused on the logistics sector and encouraging the adoption of new technologies. Logistics and freight are significant parts of the regional economy and will remain so because of our relationship to the ports of LA and Long Beach.

- Duane Baker, SANBAG



Top 3 Ideas from Each Group Discussion

Table 7

1. **IDENTIFY OPPORTUNITIES:** Do an analysis of existing conditions of all the disadvantaged areas and communities most in need to determine where applications should come from. Create a pipeline of potential projects and applications to draw from. Diversify the search for funding – don't just focus on one grant program, look at all options.
2. **ADVOCATE:** Work with regional leaders – at the local and state level – to advocate on the Inland Empire's behalf to prove how crucial these resources are to us. Empower others to advocate for us. Make sure our region is speaking with a unified voice (collaborate.) Highlight the co-benefits of GHG reduction (economic development, health, air quality, sustainable freight, etc.)
3. **LEAD:** Identify “navigators” or local liaisons that can help guide communities through the cap-and-trade program and application process. Designate an overall lead or point-of-contact so there is a source of clarity to help applicants/communities have a better chance of producing a successful project.

Suggested Next Steps

Reassess grant requirements for public transit frequency levels.

Prioritize projects that benefit disadvantaged communities, even when projects are located outside the boundaries.

Extend the Net Energy Metering (NEM2.0) program beyond 2019.

- Deborah Allen,
City of Rancho Cucamonga

Table 8

1. Education on program benefits.
2. Incentivize for the project. Link with air quality management plan. Linking the state level to the local level.
3. Higher education – community colleges. Empowering leaders and policy makers.



The Road Ahead



Senator Connie M. Leyva

“I’m committed to fighting for the Inland Empire to receive its fair share of funding for local and regional projects that will help California meet its goals for reducing greenhouse gas emissions, while also improving the health and prosperity of all the residents of the Inland Empire.

Following this workshop, I plan to continue working with all the stakeholders in the region to present a united front on behalf of our communities. Working together, we can secure Cap and Trade resources and other climate investments that will help to strengthen our communities and businesses, as well as improve the daily lives of local residents.”



Gail Goldberg

“Think about the use of the Transformative Climate Communities Program. There is potentially \$35 million available for a yet-to-be-identified disadvantaged community (in the top 5%). We should think about where in the Inland Empire we could identify qualifying communities where investment opportunities exist that meet the big agenda of reducing greenhouse gases. The community and elected officials from the Inland Empire would need to fully engage over the next few months in the discussion of the guidelines for the program to assure that the guidelines support their priorities.”



Hector De La Torre

“There have been significant California Climate Investments in the Inland Empire – over \$50 million to help with rail projects, housing, and programs in disadvantaged communities. As the various state agencies look to make more investments in the Inland Empire, we are looking for opportunities to fund energy efficiency, weatherization, urban greening and urban forestry, car scrap and replace, rural school buses, and many other projects that reduce greenhouse gases and accompanying pollutants. There will be outreach throughout the state to inform regions of the application process for these California Climate Investments, with an emphasis on impacted areas such as the Inland Empire.”

Roundtable Participants

Michelle Adams, SANBAG
Deborah Allen, City of Rancho Cucamonga
Duane Baker, SANBAG
Dennis Barton, City of Rialto
Councilmember Ben Benoit, City of Wildomar
Julie Bjork, City of Ontario
Candyce Burnett, City of Rancho Cucamonga
Kimberly Caceres, Urban Associates
Josh Candelaria, San Bernardino County
Raymond Casey, City of Yucaipa
Michael Cervantes, Congresswoman Torres
Dan Chadwick, City of Fontana
Joanna Chang, Southern California Edison
Christopher Craig, Assemblymember Rodriguez
Hector De La Torre, California Air Resources Board
Michael Dieden, Creative Housing Associates
Becky Estrella, SoCalGas
Gina Gibson, City of Rialto
Gail Goldberg, Strategic Growth Council
Corie Goldman, American Lung Association
Paul Granillo, Inland Empire Economic Partnership
Jenny Herrera, SANBAG
Bonnie Holmes-Gen, American Lung Association
Andrea Howard, WRCOG
George Huang, National Community Renaissance
Azzam Jabsheh, City of Rialto
Jonathan Kendrick, National Community Renaissance
Tabitha Kevari, City of Redlands
Nathan Kirschenbaum, YWCA of San Gabriel Valley
Julia Lave Johnston, Institute for Local Government
Jeff Lawler, SoCalGas
Senator Connie M. Leyva, California State Senate
Malisa Lieng, SANBAG
Juan Lopez, Inland Empire Economic Partnership
Kelly Lynn, SANBAG
Marc Manson, Congresswoman Torres
Craig Martinez, The California Endowment
Shawn Matejcek, City of Fontana
Daniel McGivney, SoCalGas

Mayor L. Dennis Michael, City of Rancho Cucamonga
Mayor Jesse Molina, City of Moreno Valley
Kelvin Moore
Laura Morales, League of California Cities
Rachel Norwood, GRID Alternatives
Flavio Nunez, City of Rancho Cucamonga
Victoria Pacheco, GRID Alternatives
Angela Perry, City of Rialto
Mary Petite, City of Yucaipa
Eloise Reyes, Attorney, Candidate for Assembly
Monique Reza, City of Fontana
Alex Rico, City of Fontana
Deborah Robertson, City of Rialto
Marco Robles
Sarah Rubin, Institute for Local Government
Kimberly Ruddins, City of Ontario
Councilmember Bill Ruh, City of Montclair
Tracy Ruiz, GRID Alternatives
Steve Sanders, Institute for Local Government
Manuel Saucedo, Senator Connie M. Leyva
Kristine Scott, SoCalGas
Anthony Segura, WRCOG
David Sheasby, City of Ontario
Andy Silva
Mike Smith, City of Rancho Cucamonga
Natalie Soto, GRID Alternatives
Nicole Soto, SANBAG
Edward Starr, City of Montclair
Andy Swanton, eTrucks at BYD
Christina Taylor, San Bernardino County
Mark Taylor
Karen Thompson, City of Ontario
Eleanor Torres, Incredible Edible Community Garden
Michael Townsend, Senator Connie M. Leyva
Nicole Villanueva, GRID Alternatives
Fabian Villenas, City of Rancho Cucamonga
Jennifer Ward, WRCOG
Alexa Washburn, WRCOG
Jason Welday, City of Rancho Cucamonga

Thank You to Our Participants and Co-Sponsors!

The Institute for Local Government greatly appreciates the active involvement of the 80-plus participants in the Climate Investments Leadership Roundtable and Community Dialogue who shared their knowledge and generated the ideas highlighted in these Proceedings.

A special thank you to Manuel Saucedo, District Director and his colleagues in the office of Senator Connie M. Leyva; Laura Morales, Regional Public Affairs Manager for the League of California Cities; Juan M. Lopez, Chief of Staff at the Inland Empire Economic Partnership; and Ann Marie Allen and her colleagues at the Intech Training Center in Fontana. ILG summer Loveridge Fellow Narayani (Nina) Chaurasia played a leading role in helping to plan and organize the Roundtable and Dialogue.

We would also like to thank the presenters at the Roundtable, including Senator Connie M. Leyva, Gail Goldberg, Hector De La Torre, Duane Baker, Andy Swanton, Becky Estrella, Joanna Chang, Council Member Ben Benoit, Jennifer Ward, Mayor L. Dennis Michael, Deborah Allen, Paul Granillo and Corie Goldman.

Finally, the Roundtable would not have been possible without the active engagement and support that Craig Martinez and his colleagues at The California Endowment have provided to the Land Use and Healthy Neighborhoods program at the Institute for Local Government.



The Institute for Local Government

1400 K Street, Suite 205

Sacramento, CA 95814

TEL (916) 658-8208 | FAX (916) 444-7535

www.ca-ilg.org

© 2016

More information on the Climate Investments Roundtable can be found at www.ca-ilg.org/IEroundtable