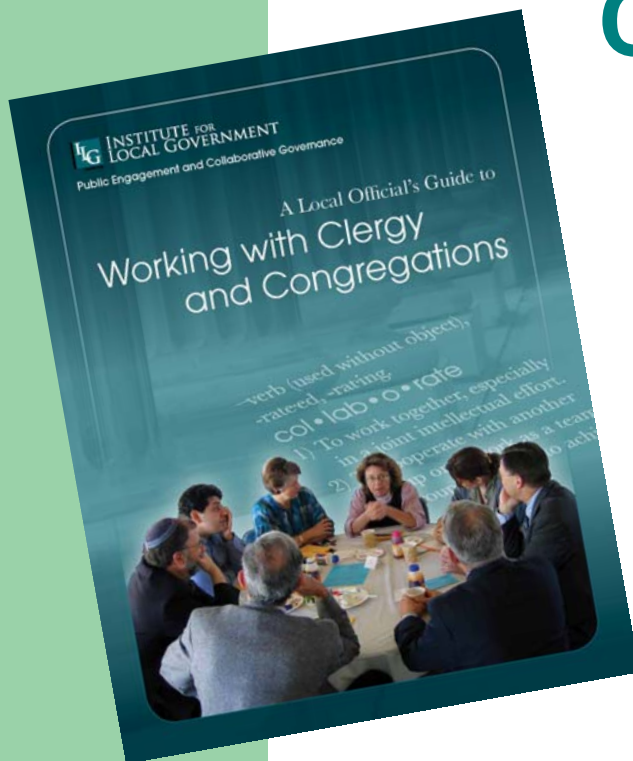


WORKING EFFECTIVELY WITH LOCAL CLERGY & CONGREGATIONS

League of California Cities
2010 Annual Conference

Terry Amsler, Program Director
Public Engagement & Collaborative Governance



The building blocks OF GOOD GOVERNMENT



INSTITUTE FOR
LOCAL GOVERNMENT

Promoting Good Government at the Local Level

Informed

Effective

Transparent

Ethical

Collaborative



Trusted


Impartial

Practical

Easy to Use

The Institute's Mission:

**To promote good
government at the
local level**



Sustainability

Ethics

Public
Engagement

Local
Government
101

Healthy
Communities

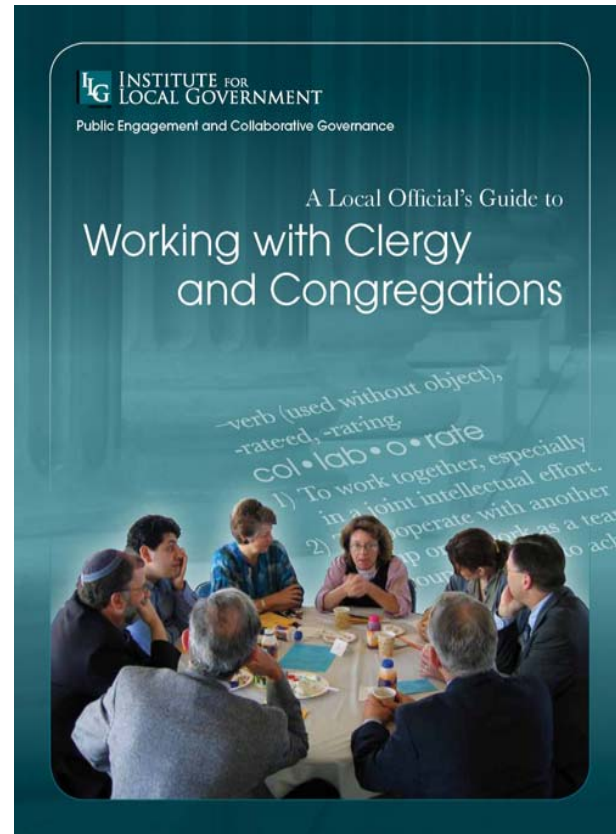
www.ca-ilg.org

ILG

New Institute Publication

A Local Official's Guide to Working with Clergy and Congregations

Supported by the Silicon Valley Community Foundation



Scope of the Religion Sector: S. F. Peninsula

Between Daly City & Sunnyvale:

- 310 Congregations
- 440 Clergy
- 1000s of Congregants



Benefits of Working Relationships with Clergy and Congregations

- Channel for outreach to residents
- Source of participants (and sites) for public engagement
- Support and extend local agency programs and services

Diversity of Religion Sector

- Of religious denominations
- Of race
- Of ethnicity
- Of culture, and
- Of nationality



Local Clergy: Many Roles

- Organizational managers
- “Thought/opinion” leaders
- Important gatekeepers
- Informed members of the community
- Conveyors of information

Opportunity for Relationships

- Clergy and congregation members typically welcome overtures by local agencies
- Service is an important component of many religions
- 2004 Peninsula Clergy Network study found a significant interest in public engagement by clergy in the region



What are the Obstacles?

- Local agency uncertainty about the appropriate level of interaction
- The lack of “linking” infrastructure within the local religion sector
- Local agencies haven’t built relationships, identified potential activities, or learned how to work with clergy & congregations

Positive Results Possible

- More informed residents
- Greater, more diverse, community participation
- Additional support for local programs and services
- Fuller use of religion sector potential/resources



To Make These Partnerships Work...

- Involve local agency staff in the effort from the beginning
- Ask them to think about possible partnerships
- Ensure department preparation and plans for effective relationships

Key Recommendations for Successful Relationships

1. Develop an up-to-date database of clergy & congregations
2. Develop & maintain relationships with local clergy
3. Understand religion sector language & practices
4. Involve & prepare local agency staff & departments
5. Think broadly & strategically about ways to work with local clergy & congregations
6. Attend congregational worship, festivals, and other events

Contact Information

- Terry Amsler, Program Director
Public Engagement & Collaborative Governance
Institute for Local Government
(916) 658-8263
tamsler@ca-ilg.org
www.ca-ilg.org www.clergyandcongregationsguide.org

- Rabbi Jay Miller, Executive Director
Peninsula Clergy Network
(650) 627-0065
pcn@blueconnect.org
www.peninsulaclergy.org



ILG is the research and education affiliate of the California State Association of Counties and the League of California Cities.

Resources | Issue Areas | Publications | About ILG

SITE SEARCH

Resources

- Public Service Ethics
- California Climate Action Network (CCAN)
- Public Engagement and Collaborative Governance
 - Public Engagement Basics and Best Practices
 - Engaging the Broader Community
 - Public Engagement Topic Areas
 - Sustaining Public Engagement
 - Community Leadership, Local Civics, and Citizen Academies
 - Online Engagement, Technology and Social Media
 - Public Engagement Publications & Resources
 - Public Engagement News & Events

Public Engagement and Collaborative Governance

The Public Engagement and Collaborative Governance program provides information and resources to help local officials in California make good decisions about the design and use of public engagement in their cities and counties.

View our website pages to find best practices, identify strategies to broaden participation, and learn from the experiences and lessons of communities throughout the state.

For topic-specific examples and information (such as public involvement in planning and budgeting, for example) see the "Public Engagement Topic Areas" pages of the website.

Check out our Guides and One-Pagers:

Available for purchase or free download

- A Local Official's Guide to Working with Clergy and Concreations



SPONSOR THANK YOU

The Institute is grateful to the James Irvine Foundation for its support of the Institute's Public Engagement and Collaborative Governance Program.



A LOCAL OFFICIAL'S GUIDE TO PUBLIC ENGAGEMENT IN BUDGETING

Strategies and examples to engage residents in local budgeting.



A LOCAL OFFICIAL'S GUIDE TO IMMIGRANT CIVIC ENGAGEMENT

Insights and examples to help ensure greater public involvement of immigrant



A Local Official's Guide to
**Working with Clergy
and Congregations**

